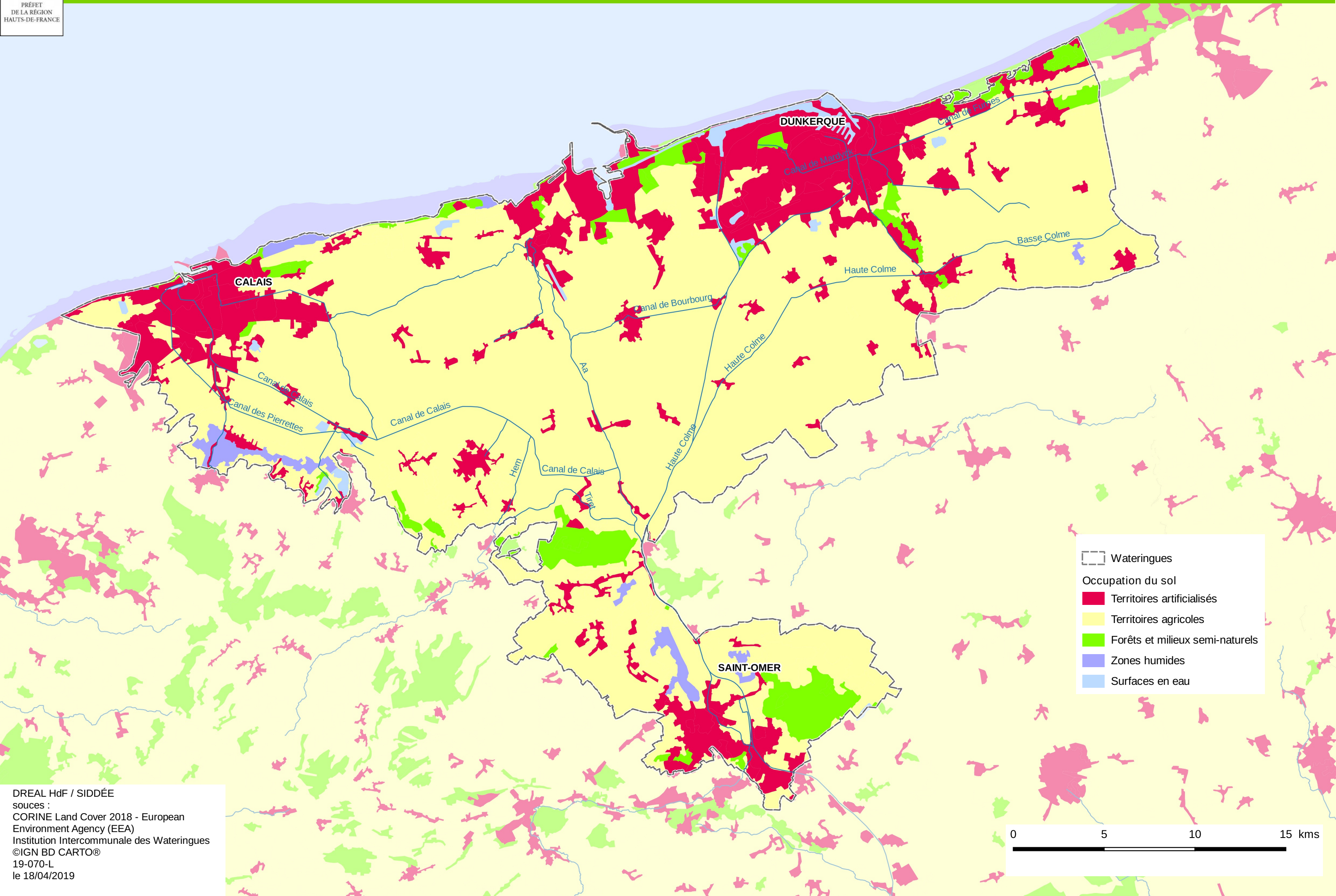
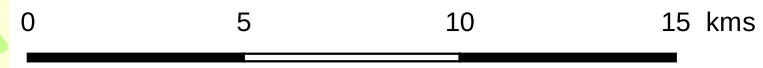


Occupation du sol



Legend for the map:

- Wateringues
- Occupation du sol
 - Territoires artificialisés
 - Territoires agricoles
 - Forêts et milieux semi-naturels
 - Zones humides
 - Surfaces en eau



DREAL HdF / SIDDÉE
sources :
CORINE Land Cover 2018 - European
Environment Agency (EEA)
Institution Intercommunale des Wateringues
©IGN BD CARTO®
19-070-L
le 18/04/2019